

WRENINGHAM MARDLE

2014

A BI-MONTHLY NEWSLETTER FOR THE LOCAL COMMUNITY

(Produced by the Wreningham Village Hall Management Committee)

Charity No: 284991

No: 199

OCTOBER/NOVEMBER



WRENINGHAM ART EXHIBITION 2014



OPENING TIMES:



Saturday/Sunday
11th and 12th
October
10 – 4 p.m.

Admission: £1.50



SEE INSIDE FOR FURTHER DETAILS



NEED A NUMBER?

VILLAGE HALL	CHAIRMAN - JOHN BLIGH	489301
VILLAGE HALL BOOKINGS	JILL HUSTLER	481823
SOCIAL CLUB	CHAIRMAN - IAN HOLLOWAY	481700
PARISH COUNCIL	MICHAEL HILL	488379
CLERK	HEIDI FRARY	01603 759215
CHURCH WARDEN	CHRISTINE MINNS	488123
WRENINGHAM VC PRIMARY	ROBERT JONES	489355
MARDLE ARTICLES	ANNIE GREENING	489690
TREE WARDEN	IAN DOBSON	489725
COFFEE MORNING	JEAN LAMBOURNE	481947
FREE SALE	VAL KEEL	488231
FLOWER CLUB	TRICIA MOORE	570189
MOTHER & TODDLER	SHARON SMITH	01953 602201
BRAMBLE BEARS	DEBBIE ALVES	07847/225093
SHORT MAT BOWLS	SUE SAYERS	489654
FLEXI BUS	BOOKINGS	0845 600
WYMONDHAM POLICE	SWITCHBOARD	101

MESSAGE FROM CHAIRMAN

Summer sun is still with us as the season of mellow mists takes hold and the nights draw in, so time for the annual Art Exhibition to lift the autumnal spirits over the weekend of 10th to 12th October. With an outstanding centre-piece and live demonstrations by different artists on both Saturday and Sunday, it promises to be an event not to be missed.

The regular Social Club exciting programme of events continue apace with the second Friday "fish & chips" night proving really popular and a great way to meet and socialise with fellow villagers. On a point of general information, South Norfolk Council are due to start domestic glass bin collections on 1st October, but the Village Hall will continue to offer plain and coloured glass bins in the car park. It is important to help us to maintain this service to our village as it provides a revenue for the hall and a facility for the Social Club bar, so please ensure that if you have any surplus bottles, which you do not have enough capacity for in your own bin that they go into those bins."

John Bligh (Chairman)

The deadline for copy for the next edition of the Mardle is Wednesday 12th November.

PARISH COUNCIL

(Clerk—Heidi Frary-01603759215 clerk.wpc@gmail.com)

THE NEXT PARISH COUNCIL MEETING - TUESDAY 11th November

BONFIRES (AND YOUR NEIGHBOURS!)

It is perfectly legal to have a bonfire and there are no restrictions as to when you can have it. However, you must comply with the Environmental Protection Act.

Following a complaint to the Parish Council and in the interest of good neighbourliness, the following might be useful:

- Timing – Choose a good time for you and your neighbours. Avoid weekends and bank holidays!
- Frequency - Try to have as few bonfires as possible
- Management - Never leave a bonfire unattended
- Materials - Avoid wet or green materials as they will produce excess smoke. Do not burn anything likely to produce excessive, pungent and toxic smoke, e.g. rubber and plastic.
- Weather – Wind can blow smoke towards the neighbours; stronger winds could impact neighbours further away.

A MESSAGE FROM S.N.D.C

Site Notices will no longer be erected for householder application unless there is a statutory requirement to do so i.e. it is in a conservation area or is a listed building (in both these instances we also have to put and advert in the local press), or is adjacent to open land (i.e. where there is no address point)

We will continue to notify in writing all neighbours adjacent to the boundary of the site, or opposite the site if it relates to any front alterations or new access, the selection of any other neighbours will be a judgement call by the case officer (as is the case at present), and whether they are materially affected by the proposal.

Polite Notice

After trimming you hedge to perfection, please remember to clear away your cuttings from the road as they can block drains and lead to problems with flooding. They can also cause punctures for cyclists and spoil the look of the village!

Wrenningham Village Hall



Art Exhibition

Preview Evening

Friday 10th October 2014

8 – 10 pm

Meet the artists, study the artwork

Admission £2.00. Licensed Bar.



Exhibition opening times:

**Saturday – Sunday
11-12 October 2014,
10 am to 4 pm
(Admission £1.50)**

**Demonstrations by local artists
Caroline Hyde-Brown and Chris Scales**

Queries? Contact Val Keel: 01508 488231



WHAT'S ON?

DANCE TO LIVE BANDS

**PUT YOUR DANCING SHOES ON AND COME AND JOIN
US AT THE VILLAGE HALL.**

Dance to live 50's, 60's, classics. Have a jive, or simply come
and listen to the bands!

Saturday 18th October - "Wypeout"

Saturday 15th November - "Hi - Definition"

8.15pm Onwards

Admission £6.50

(IN AID OF HALL FUNDS)

STARFIGHTER ROCK 'N' ROLL

Saturday 25th October - "Jack Baymoore & The Bandits"

Saturday 29th November - "The Skip Rats"



DUMPLIN' COUNTRY

Sunday 19th October - "Terry Edwards Band"

Sunday 9th November - "Longshot"

Doors open 1 p.m.

£5

HOT DRINKS / BAR / GOOD RAFFLE!

SHORT MAT BOWLS

Each Thursday, 7.30 p.m in the Village Hall.

Please come and join our friendly group whether you are an experienced bowler or a
complete beginner!

All ages welcome.

For further details call Sue on 01508 489654

FLOWER CLUB

Thursday 29th October: Mrs A. Kent 'Well Heeled'

Thursday 26th November: Mrs A. Bridge 'Christmas crackers'

Doors open 1.30 p.m.

Visitors welcome –

For details please contact Sue Rudd on: 489526

Last Wednesday Coffee Shop.



Wednesday 29th October

Wednesday 26th November

10 a.m. – 12 noon, in the main hall.

'Come and meet your neighbours, old and new,

Have a chat over a coffee, a bacon roll and homemade cakes'

Homemade jams, chutneys and seasonal veg on sale too!

ALL WELCOME.

ZUMBA

Every Monday evening from

6.30p.m. – 7.30p.m.

Also Wednesday mornings 9.30 – 10.30 a.m.

In the Village Hall

£5 (Pay As You Go)

New Yoga Class

Monday's, term time 9.15 to 10.15 a.m.

October 6th, 13th, 20th

November 3rd, 10th, 17th, 24th

Contact Gwen on: 01508 570350

"Quiz & Supper"
Friday 14th November
7.15 pm for 7.30 pm

WRENINGHAM VILLAGE HALL

£5.00 to include a light supper

Come as a team of up to 6 people or individually and join a team.
If possible, book in advance to help with numbers for supper.

Call Christine on 01508 488123
In aid of Ashwellthorpe and Wreningham church expenses

BIRD IN HAND

OCTOBER

Trafalgar Day 21/10/14 Nautical Ales

Jazzebo 24/10/14

Quiz Night 29/10/14

Party Night 31/10/14 Halloween Extravaganza.

Spooky Menu. Scary Ales & Cocktails

Music from 'The Men from Uncle Barry'

Dress up if you dare !!!

NOVEMBER

Quiz Night 26/11/14

Jazzebo 28/11/14

Xmas Menu now available.

Call: 489438

WRENINGHAM ALL SAINTS CHURCH

The regular 9.15 am Sunday service has been changed from the 2nd Sunday in each month to 1st Sunday in each month. This means that we do not have a scheduled service on Remembrance Sunday when the names on the war memorial are normally read out. However a service of Remembrance will take place at Wreningham church at 10.30 am when we will be reading the names listed on both Ashwellthorpe and Wreningham war memorials.

Once again we were pleasantly surprised by the support for our harvest appeal for gifts to go to the Norwich Foodbank. Thank you to all who contributed.

Christine Minns churchwarden



NEW MOTHER AND TODDLER GROUP

New Mother and Toddler Group Meets every other Friday 9.30 starting term time 12th Sept, Oct 3rd and 17th, Nov 7th and 21st.

SPRATTS COACHES

For prices and to book please call: 489262

Tuesday 21 October 2014 08:00am - 05:00pm
All aboard the SS Broadway at Wicksteed Park

Saturday 8th November 2014 08:00am - 05:00pm
Cake International at the NEC Brmingham

WRENINGHAM FUEL TRUST

The Trust Deed sets out that "The income from Wreningham Fuel Trust has to be given to provide fuel for the poor persons of the parish of Wreningham". This means that the charity income is available to anybody in the parish who is in need and the application may be made by the needy person or anybody who wishes to nominate a person to receive help towards their fuel bills. It is a requirement of the Trust Deed that all the money received in a year is paid out in the same year. Traditionally, in the event of few applicants, the Trust invites persons over 70 years to apply to the fund for consideration.

We are now inviting applications for a distribution to take place in January. Please apply by Wednesday 5th November with name and address of applicant or nominated person to the clerk: Christine Minns, High Gables, Church Road, Wreningham ,NR16 1BH (Tel: 488123). If you need any further explanation or details do contact me by phone.

Poppy Appeal

Ruby and Christine Hallis will not be doing a door to door poppy appeal this year. They wish to thank everybody for their support over the past 6 years.

Hopefully, with many stores and other public places having collection boxes along with street collections, anybody who wishes to support the appeal will still be able to do so.

**WHY NOT ADVERTISE YOUR LOCAL BUSINESS OR
SERVICES HERE?**

(Just a £5 Donation for the year!)

Contact Jill Hustler on 481823

DOMESTIC AL

Electrical Appliance Repair

(From washing machines to Dyson vacuums)

01508 481919

LOST CONTROL OF YOUR PLOT?

Contact Trevor, your local Green Gardener

On 01508 489253 or Email tdw2106@gmail.com

SARAH'S CAKES

Celebration cakes with a homemade touch

07967 931754

www.sarahscakesoffundenhall.co.uk

REEDER TIMBER

Supplier: - Firewood, Tree Surgery, Fencing

01508 488452

D.M.G

'Your local trusted builder'

***Renovation to New build. General property
maintenance.***

Call Darryl on 489690 or 07584492508

October & November @ WrenSocial



DON'T MISS OUT!

Family Games Night



Fri 3rd Oct

Bar Open: 6:30pm

Games Begin: 7pm

- Weasel & Veteran Elephant Racing
 - Play your Cards Right (Higher or Lower)
 - Safe Cracker (Guess the Code)
 - Six of a Kind Dice • Roll-a-ball
- WIN FUN MONEY FOR PRIZE AUCTION

2ND FRIDAY:

OCT 10

NOV 14

Fish & Chips Friday



Eat Here or Take Home
CHIP VAN IN CAR PARK 6-7.30PM

Fri 7th Nov FAMILY NIGHT From 6:30pm

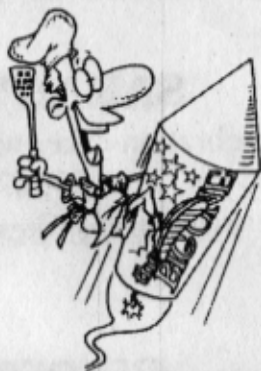
FRI 17 OCT

CURRY NIGHT

From 7pm

IT'S BACK!
Curries provided.
They're delicious!!

Just make a
donation for
your meal.



SAT 8 NOV

**WrenSocial
FIREWORKS
& Family BBQ
from 7pm.**

LAST FRIDAY:

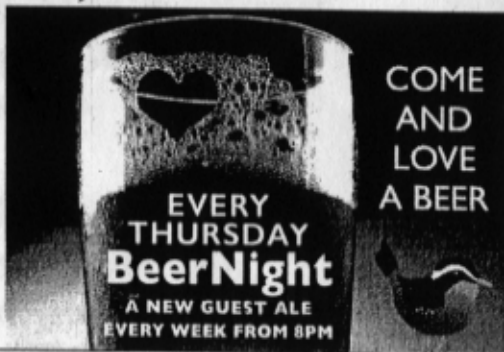
Bar open from 8pm

OCT 31

NOV 28

LADIES NIGHT

SPECIAL COCKTAIL EVENINGS



**FOLLOW THE WREN FOR UPDATES: WEB: WrenSocial.com
TWITTER: @WrenSocial FACEBOOK: facebook.com/WrenSocial**