

Story of the Land

- and why "The Farthings?"



2020



2022

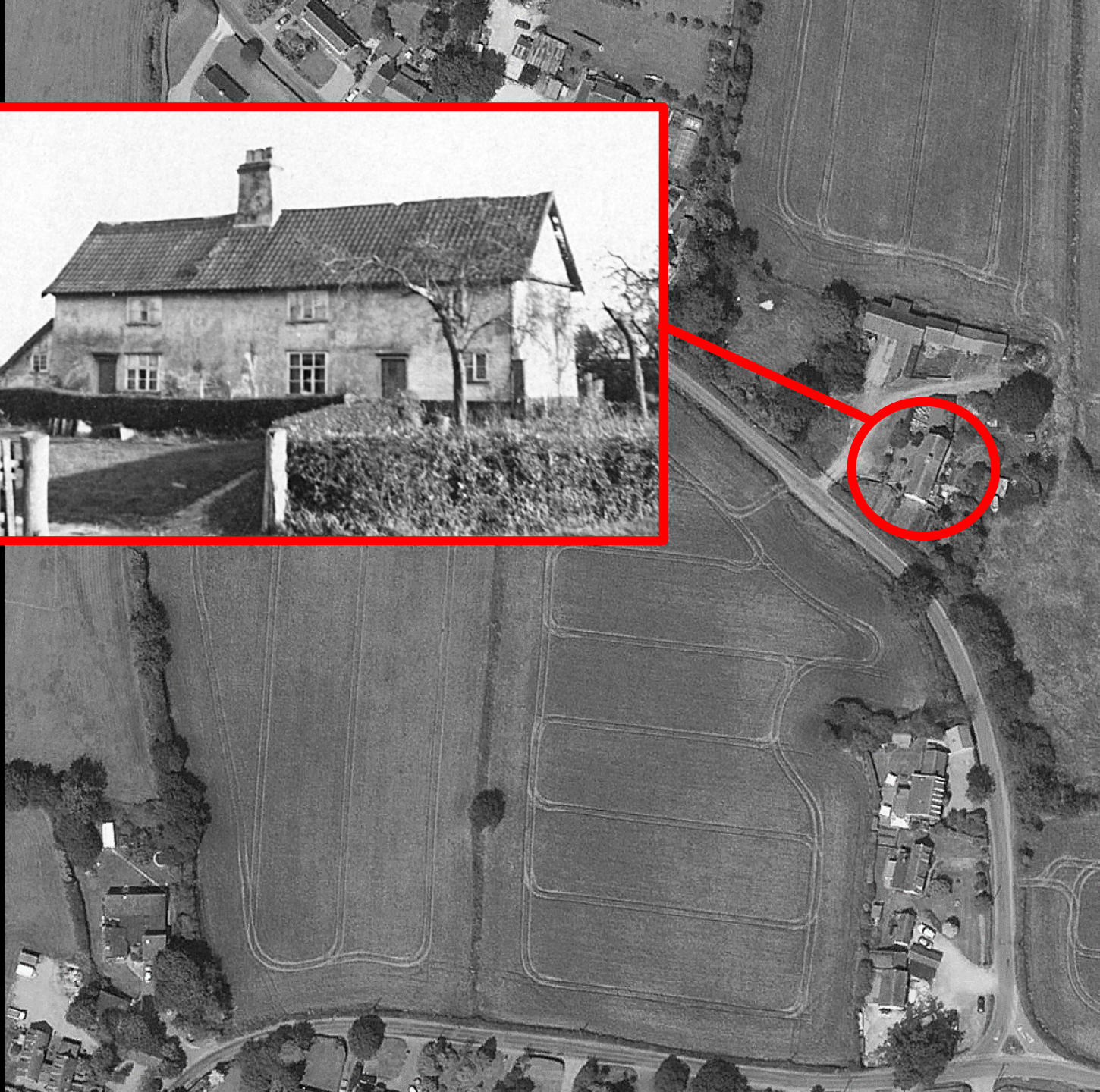
New north
boundary of
"10 house"
garden
extensions

Late
1900s

..... used to grow cattle fodder in
the late 20th century - until about
1985 - after which it became cattle
pasture



early
1900s
image



Farmhouse
at Elm Tree
Farm

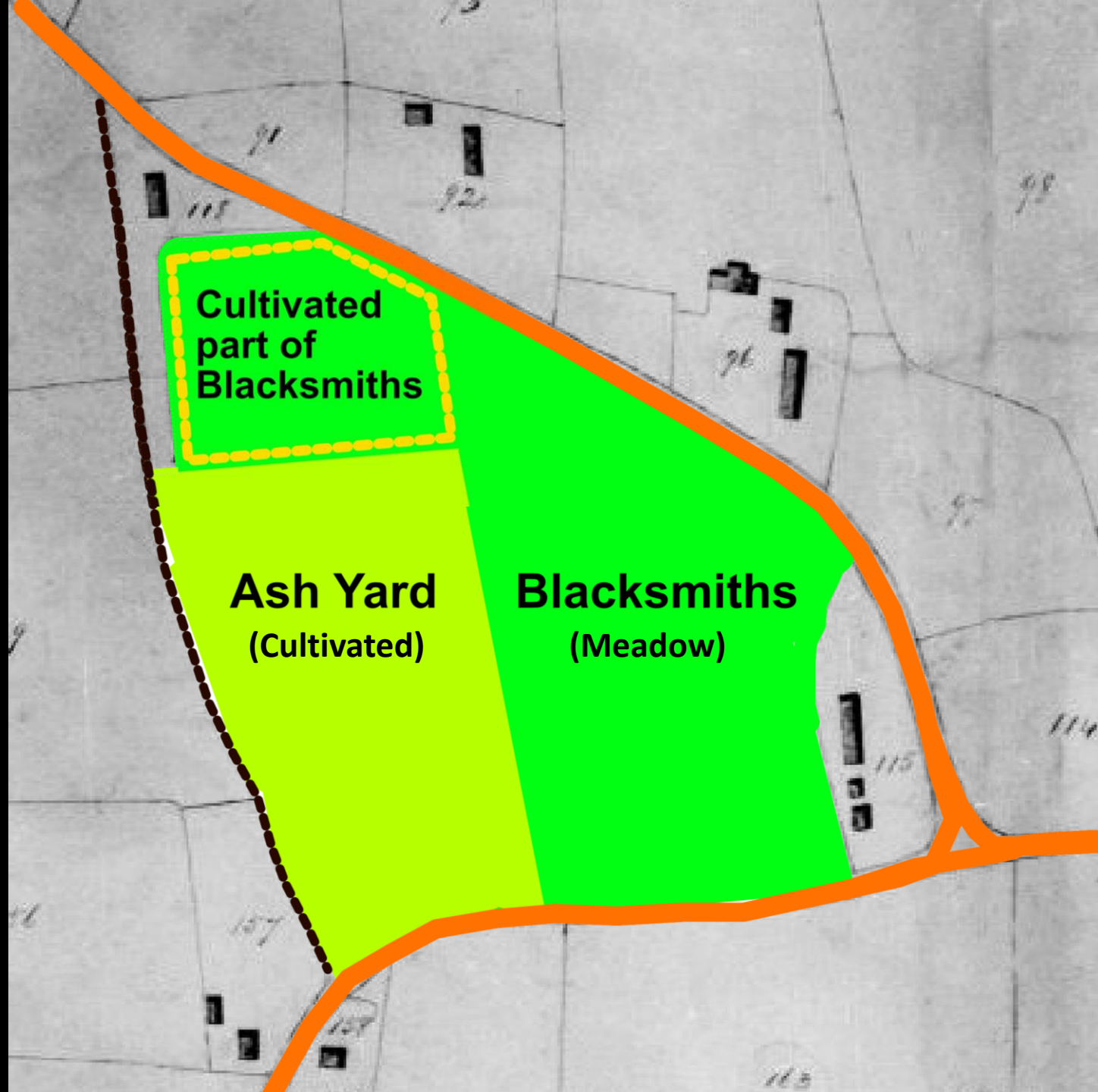
early
1900s
image



Blacksmiths
Shop

1838 Map

Highlighting
field names

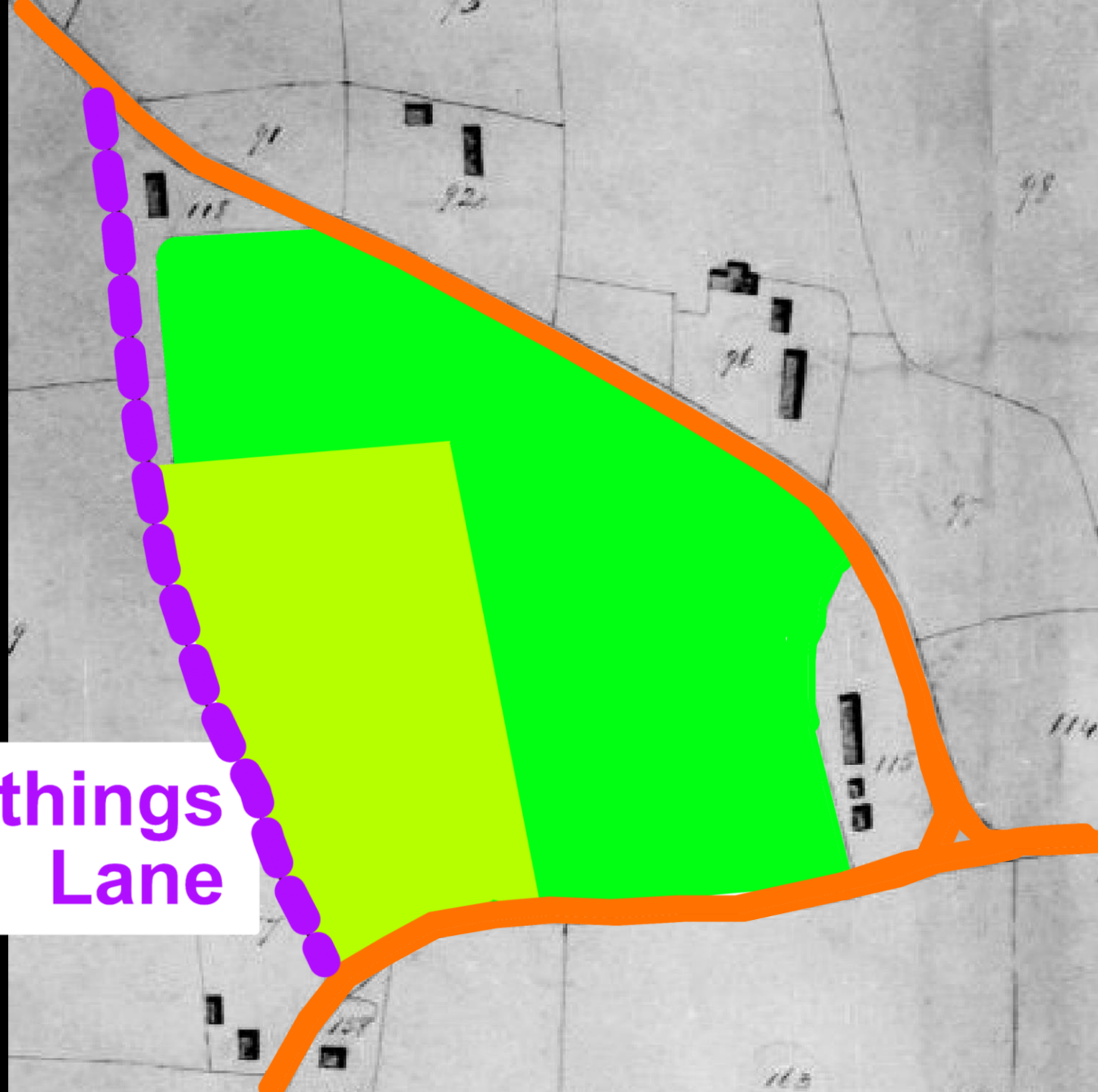


Crop
planting
details still
exist from
1857 - 1883

1600s

Local Manor's
Court
"Admissions"
book
identified:

Farthings
Lane



Hence:

